

# RAZORBACK ROAD PARKING GARAGE



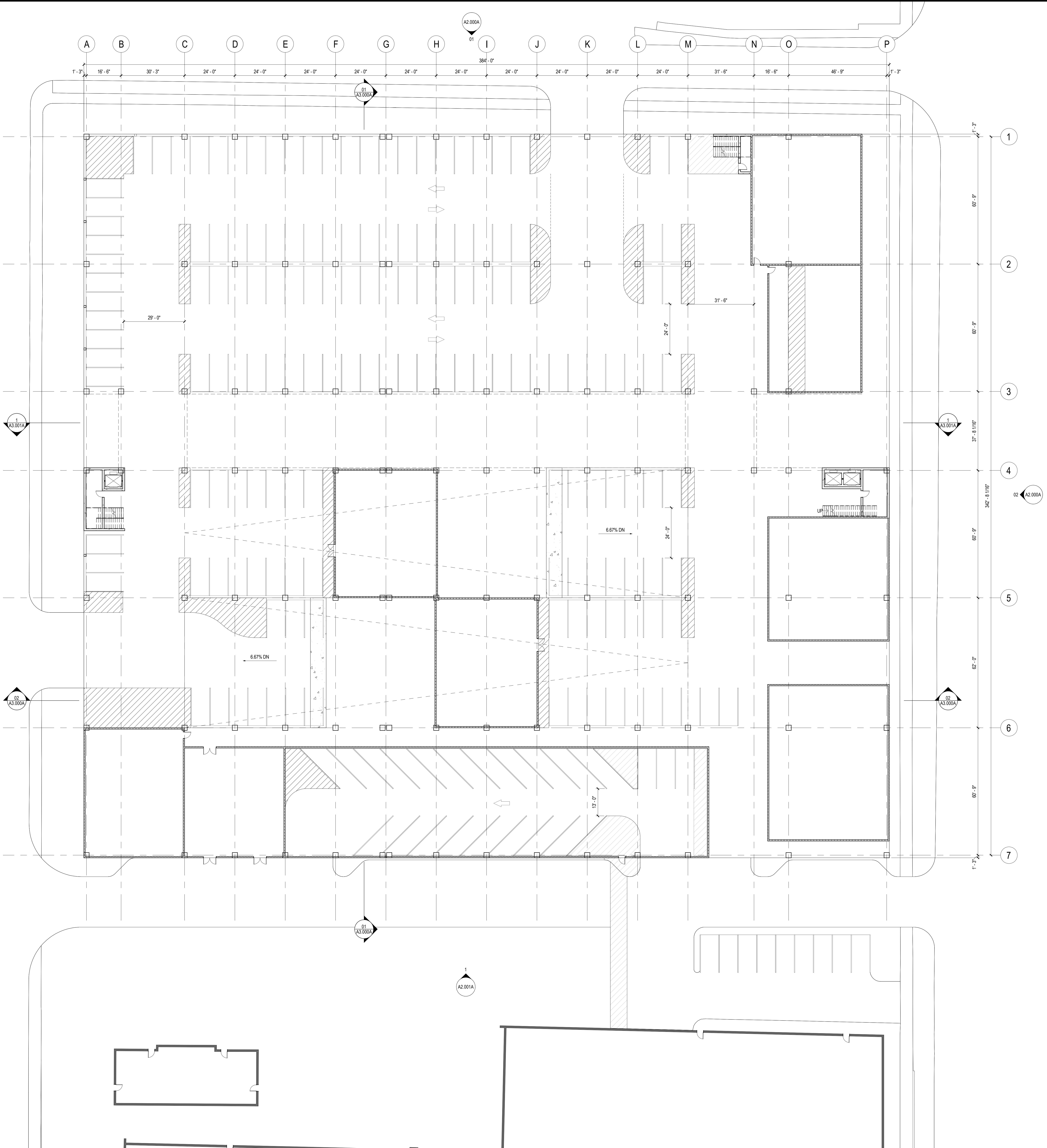
Concept Pricing  
Package  
April 23, 2026

Two Step Option



**Gensler**





01 A - CONSTRUCTION PLAN - LEVEL 01 - TWO-STEP

SCALE: 1/16" = 1'-0"

REF: 01 / A2.000A

SHEET NOTES

UNIVERSITY OF ARKANSAS

68 S RAZORBACK RD, FAYETTEVILLE, ARKANSAS 72701, UNITED STATES



UNIVERSITY OF ARKANSAS

Gensler

5055 Greenville Avenue  
Dallas, TX 75206  
United States

Tel 214.273.1500  
Fax 214.273.1505

GENERAL NOTES

- A. RE: G0 SHEET SERIES FOR LEGENDS, SYMBOLS AND ABBREVIATIONS.
- B. RE: G1 SHEET SERIES FOR CODE ANALYSIS RELATED TO PROJECT.
- C. ALL PARTITIONS TO BE TYPE "XXX" UNO. ALL FLURRED-OUT PARTITIONS TO BE TYPE "XXX" UNO. RE: A0.300 SERIES FOR PARTITION TYPES AND DETAILS.
- D. DOOR NUMBERS ARE THE SAME AS THE ROOM INTO WHICH THEY SWING. MULTIPLE DOORS INTO A SINGLE ROOM HAVE AN ALPHABETICAL DESIGNATION. RE: A0.400 FOR DOOR SCHEDULE AND TYPES.
- E. ALL PARTITIONS AT THE WINDOW WALL ARE CENTERED ON EITHER COLUMNS OR WINDOW MULLIONS UNO.
- F. COORDINATE AND PROVIDE BLOCKING FOR MILLWORK AND ITEMS ATTACHED OR MOUNTED TO PARTITIONS OR CEILINGS.
- G. PARTITIONS ARE DIMENSIONED FROM FINISH FACE TO FINISH FACE. UNO MAINTAIN DIMENSIONS MARKED "CLEAR". ALLOW FOR THICKNESSES AND MOUNTING OF FINISHES.

△ Date Description

Seal / Signature

**PRELIMINARY**  
THESE DOCUMENTS ARE INCOMPLETE AND ARE RELEASED FOR INTERIM REVIEW ONLY AND ARE NOT INTENDED FOR REGULATORY APPROVAL, PERMIT, OR CONSTRUCTION PURPOSES.  
ARCHITECT'S NAME  
ARKANSAS REGISTERED ARCHITECT LICENSE #  
XXXXXXXXXX  
01/23/23

Project Name

RAZORBACK ROAD  
PARKING GARAGE

Project Number

122.0144.000

Description

CONSTRUCTION PLAN - LEVEL 01 -  
TWO-STEP

KEY PLAN

Scale

As indicated

Ref North



A1.101A

© 2026 Gensler

- A. RE: G0 SHEET SERIES FOR LEGENDS, SYMBOLS AND ABREVIATIONS.
- B. RE: G1 SHEET SERIES FOR CODE ANALYSIS RELATED TO PROJECT.
- C. ALL PARTITIONS TO BE TYPE "XXX", UNO, ALL FLURRED OUT PARTITIONS TO BE TYPE "XXX", UNO. RE: A0300 SERIES FOR PARTITION TYPES AND DETAILS.
- D. DOOR NUMBERS ARE THE SAME AS THE ROOM NUMBER THEY SWING. MULTIPLE DOORS INTO A SINGLE ROOM HAVE AN ALPHABETICAL DESIGNATION. RE: A0400 FOR DOOR SCHEDULE AND TYPES.
- E. ALL PARTITIONS AT THE WINDOW WALL ARE CENTERED ON EITHER COLUMNS OR WINDOW MULLIONS UNO.
- F. COORDINATE AND PROVIDE BLOCKING FOR MILLWORK AND ITEMS ATTACHED OR MOUNTED TO PARTITIONS OR CEILINGS.
- G. PARTITIONS ARE DIMENSIONED FROM FINISH FACE TO FINISH FACE. UNO, MAINTAIN DIMENSIONS MARKED TO ALLOW FOR THICKNESSES AND MOUNTING OF FINISHES.

Seal / Signature

**PRELIMINARY**  
THESE DOCUMENTS ARE INCOMPLETE, AND ARE RELEASED FOR  
INTERIM REVIEW ONLY. ARE NOT INTENDED FOR REGULATOR  
APPROVAL, PERMIT, OR CONSTRUCTION PURPOSES  
  
ARCHITECT'S NAME  
ARKANSAS REGISTERED ARCHITECT: LICENSE #  
XXXXXXXXXX  
  
01/23/23

Project Name

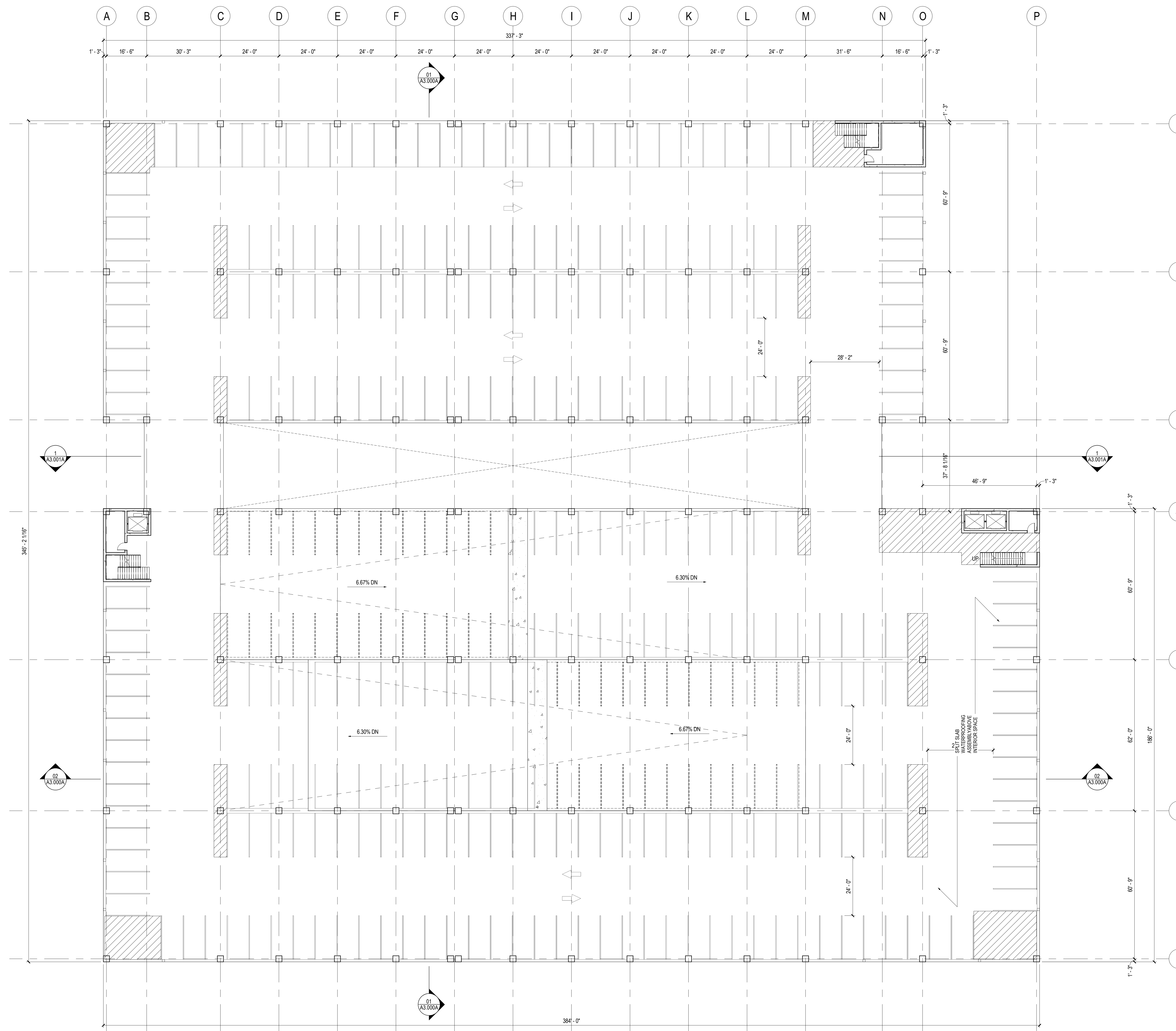
RAZORBACK ROAD  
PARKING GARAGE  
Project Number

122.0144.000

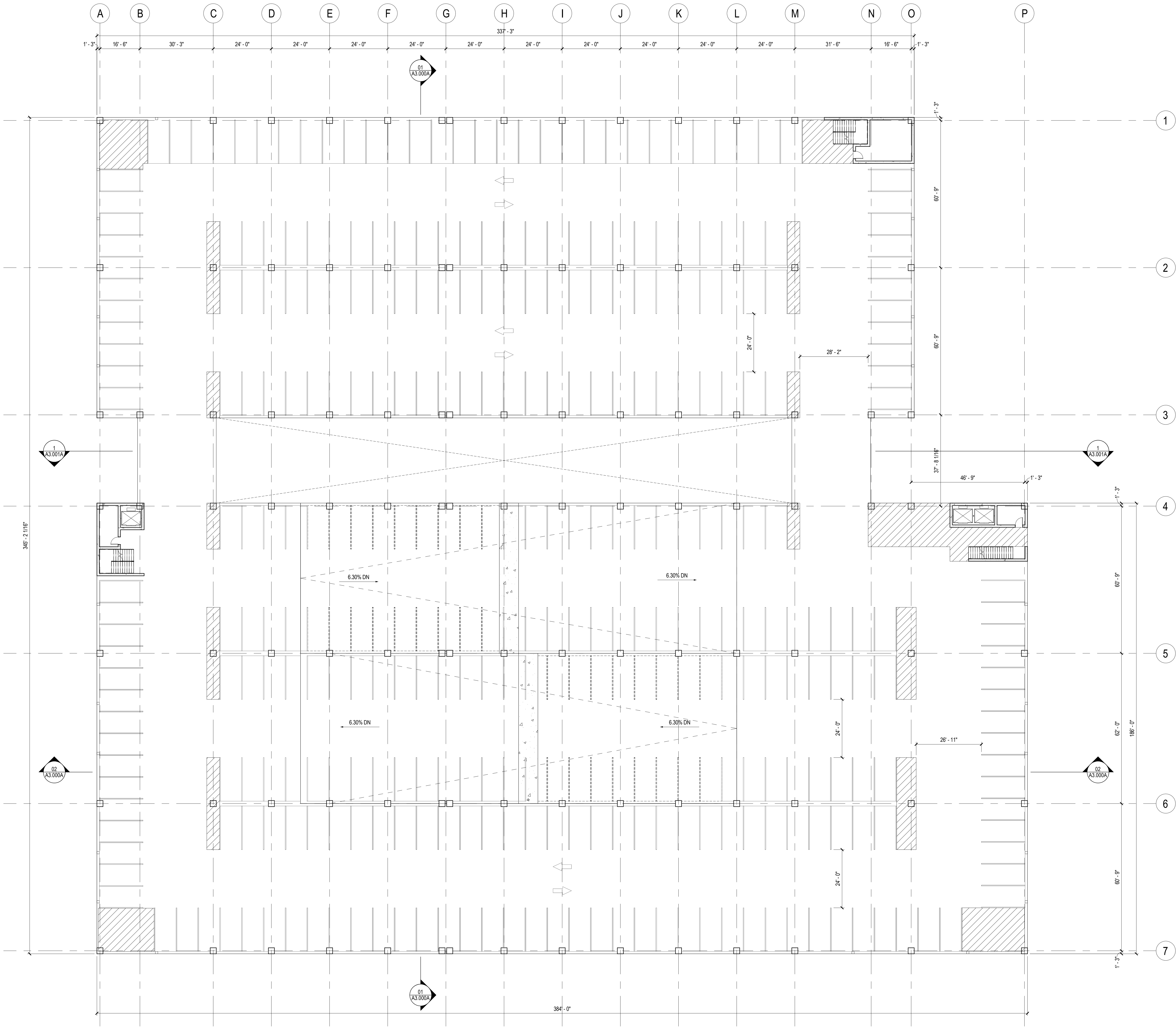
Description	CONSTRUCTION PLAN - LEVEL 02 - TWO-STEP
-------------	-----------------------------------------

Scale  
As indicated Ref North

**A1.102A**







SHEET NOTES

GENERAL NOTES

- A. RE: G0 SHEET SERIES FOR LEGENDS, SYMBOLS AND ABBREVIATIONS.
- B. RE: G1 SHEET SERIES FOR CODE ANALYSIS RELATED TO PROJECT.
- C. ALL PARTITIONS TO BE TYPE "XXX" UNO. ALL FLURRED-OUT PARTITIONS TO BE TYPE "XXX" UNO. RE: A0 300 SERIES FOR PARTITION TYPES AND DETAILS.
- D. DOOR NUMBERS ARE THE SAME AS THE ROOM INTO WHICH THEY SWING. MULTIPLE DOORS INTO A SINGLE ROOM HAVE AN ALPHABETICAL DESIGNATION. RE: A0 400 FOR DOOR SCHEDULE AND TYPES.
- E. ALL PARTITIONS AT THE WINDOW WALL ARE CENTERED ON EITHER COLUMNS OR WINDOW MULLIONS UNO.
- F. COORDINATE AND PROVIDE BLOCKING FOR MILLWORK AND ITEMS ATTACHED OR MOUNTED TO PARTITIONS OR CEILINGS.
- G. PARTITIONS ARE DIMENSIONED FROM FINISH FACE TO FINISH FACE. UNO MAINTAIN DIMENSIONS MARKED "CLEAR". ALLOW FOR THICKNESSES AND MOUNTING OF FINISHES.

**UNIVERSITY OF ARKANSAS**  
68 S RAZORBACK RD, FAYETTEVILLE, ARKANSAS 72701, UNITED STATES

  
**UNIVERSITY OF ARKANSAS**

**Gensler**  
5055 Greenville Avenue  
Dallas, TX 75206  
United States

Tel: 214.273.1500  
Fax: 214.273.1505

△	Date	Description
---	------	-------------

Seal / Signature

**PRELIMINARY**  
THESE DOCUMENTS ARE INCOMPLETE AND ARE RELEASED FOR INTERIM REVIEW ONLY AND ARE NOT INTENDED FOR REGULATORY APPROVAL, PERMIT, OR CONSTRUCTION PURPOSES.

ARCHITECT'S NAME  
ARKANSAS REGISTERED ARCHITECT, LICENSE #  
XXXXXXXXXX  
01/23/23

Project Name  
**RAZORBACK ROAD PARKING GARAGE**

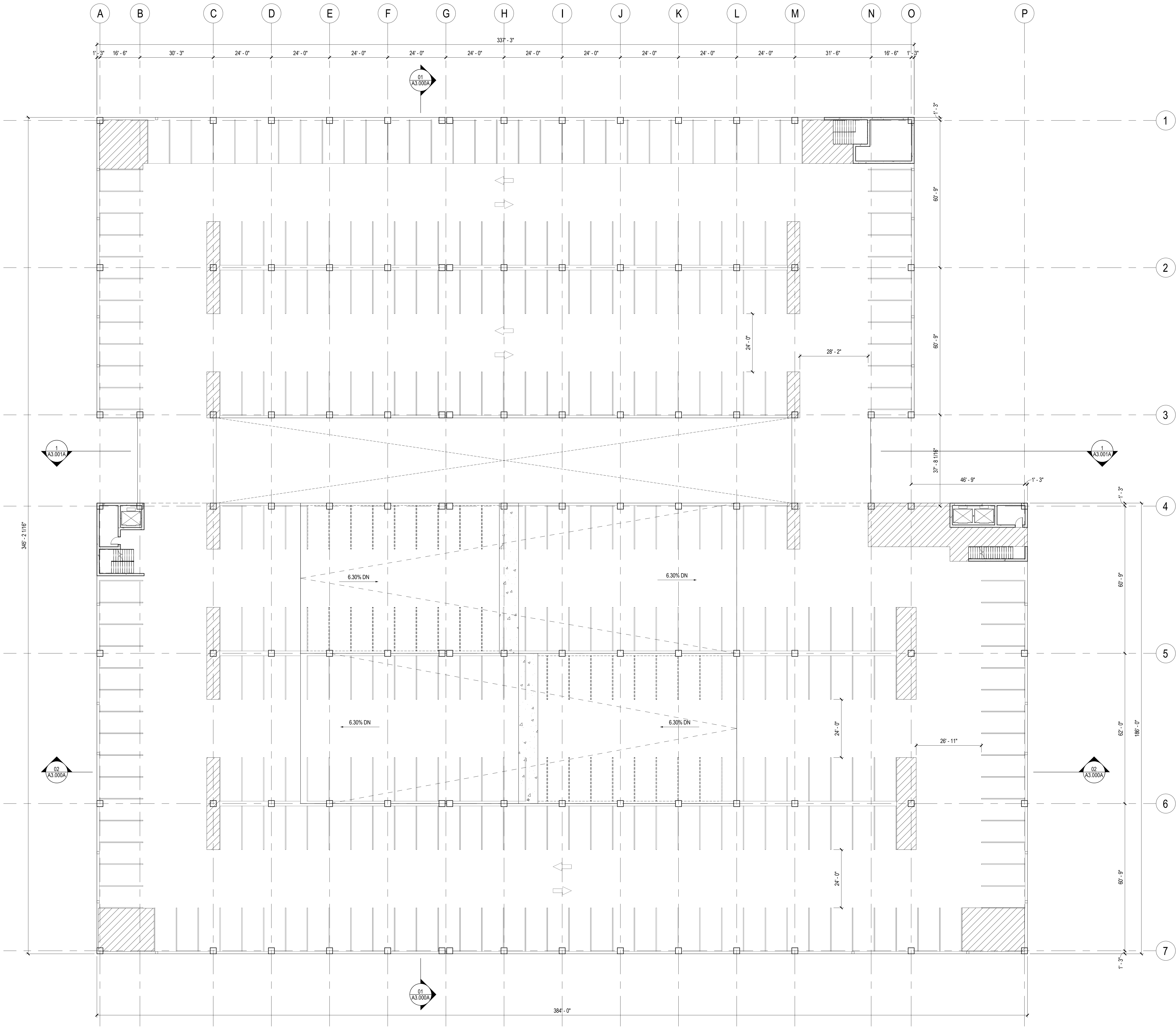
Project Number  
**122.0144.000**

Description  
**CONSTRUCTION PLAN - LEVEL 03 - TWO-STEP**

Scale  
As indicated

Ref North  


**A1.103A**



SHEET NOTES

**UNIVERSITY OF ARKANSAS**  
68 S RAZORBACK RD, FAYETTEVILLE, ARKANSAS 72701, UNITED STATES

  
**UNIVERSITY OF ARKANSAS**

**Gensler**  
5055 Greenville Avenue  
Dallas, TX 75206  
United States

Tel 214.273.1500  
Fax 214.273.1505

GENERAL NOTES

- A. RE: G0 SHEET SERIES FOR LEGENDS, SYMBOLS AND ABBREVIATIONS.
- B. RE: G1 SHEET SERIES FOR CODE ANALYSIS RELATED TO PROJECT.
- C. ALL PARTITIONS TO BE TYPE "XXX" UNO. ALL FLURRED-OUT PARTITIONS TO BE TYPE "XXX" UNO. RE: A0.300 SERIES FOR PARTITION TYPES AND DETAILS.
- D. DOOR NUMBERS ARE THE SAME AS THE ROOM INTO WHICH THEY SWING. MULTIPLE DOORS INTO A SINGLE ROOM HAVE AN ALPHABETICAL DESIGNATION. RE: A0.400 FOR DOOR SCHEDULE AND TYPES.
- E. ALL PARTITIONS AT THE WINDOW WALL ARE CENTERED ON EITHER COLUMNS OR WINDOW MULLIONS UNO.
- F. COORDINATE AND PROVIDE BLOCKING FOR MILLWORK AND ITEMS ATTACHED OR MOUNTED TO PARTITIONS OR CEILINGS.
- G. PARTITIONS ARE DIMENSIONED FROM FINISH FACE TO FINISH FACE. UNO MAINTAIN DIMENSIONS MARKED "CLEAR". ALLOW FOR THICKNESSES AND MOUNTING OF FINISHES.

△	Date	Description
---	------	-------------

Seal / Signature

**PRELIMINARY**  
THESE DOCUMENTS ARE INCOMPLETE AND ARE RELEASED FOR INTERIM REVIEW ONLY AND ARE NOT INTENDED FOR REGULATORY APPROVAL, PERMIT, OR CONSTRUCTION PURPOSES.

ARCHITECT'S NAME  
ARKANSAS REGISTERED ARCHITECT, LICENSE #  
XXXXXXXXXX  
01/23/23

Project Name  
**RAZORBACK ROAD PARKING GARAGE**

Project Number  
**122.0144.000**

Description  
**CONSTRUCTION PLAN - LEVEL 04 - TWO-STEP**

Scale  
As indicated

Ref North  


**A1.104A**



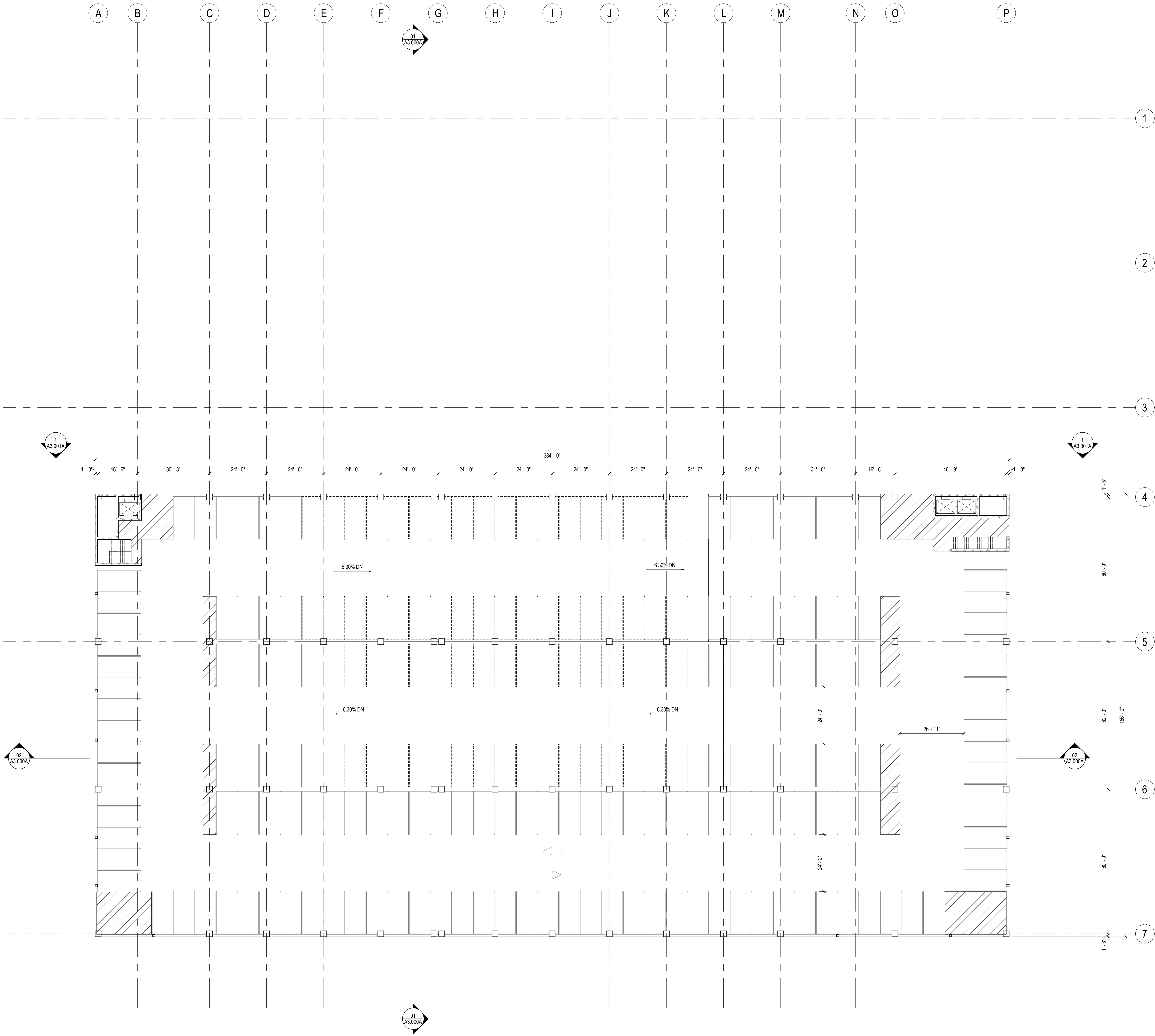
- A. RE: GO SHEET SERIES FOR LEGENDS, SYMBOLS AND ABREVIATIONS.
- B. RE: G1 SHEET SERIES FOR CODE ANALYSIS RELATED TO PROJECT.
- C. ALL PARTITIONS TO BE TYPE "XXX", UNO: ALL FURRED-OUT PARTITIONS TO BE TYPE "XXX", UNO: RE: A4000 SERIES FOR PARTITION TYPES AND DETAILS.
- D. DOOR NUMBERS ARE THE SAME AS THE ROOM INTO WHICH THEY SWING. MULTIPLE DOORS INTO A SINGLE ROOM HAVE AN ALPHABETICAL DESIGNATION. RE: A4040 FOR DOOR SCHEDULE AND TYPES.
- E. ALL PARTITIONS AT THE WINDOW WALL ARE CENTERED ON EITHER COLUMNS OR WINDOW MULLIONS UNO.
- F. COORDINATE AND PROVIDE BLOCKING FOR MILLWORK AND ITEMS ATTACHED OR MOUNTED TO PARTITIONS OR CEILINGS.
- G. PARTITIONS ARE DIMENSIONED FROM FINISH FACE TO FINISH FACE. UNO MAINTAIN DIMENSIONS MARKED TO ALLOW FOR THICKNESSES AND MOUNTING OF FINISHES.

Date	Description
------	-------------

<p><b>PRELIMINARY</b></p> <p>THESE DOCUMENTS ARE INCOMPLETE, AND ARE RELEASED FOR INTERIM REVIEW ONLY ARE NOT INTENDED FOR REGULATOR APPROVAL, PERMIT, OR CONSTRUCTION PURPOSES</p> <p><b>ARCHITECT'S NAME</b></p> <p>ARKANSAS REGISTERED ARCHITECT: <b>LICENSE #</b> <b>XXXXXXXXXX</b></p> <p>01/23/23</p>
-------------------------------------------------------------------------------------------------------------------------------------------------------------------------------------------------------------------------------------------------------------------------------------------------------------------------

Scale  
As indicated Ref North

**A1.105A**



SHEET NOTES

GENERAL NOTES

- A. RE: G0 SHEET SERIES FOR LEGENDS, SYMBOLS AND ABBREVIATIONS.
- B. RE: G1 SHEET SERIES FOR CODE ANALYSIS RELATED TO PROJECT.
- C. ALL PARTITIONS TO BE TYPE "XXX" UNO. ALL FLURRED-OUT PARTITIONS TO BE TYPE "XXX" UNO. RE: A0.300 SERIES FOR PARTITION TYPES AND DETAILS.
- D. DOOR NUMBERS ARE THE SAME AS THE ROOM INTO WHICH THEY SWING. MULTIPLE DOORS INTO A SINGLE ROOM HAVE AN ALPHABETICAL DESIGNATION. RE: A0.400 FOR DOOR SCHEDULE AND TYPES.
- E. ALL PARTITIONS AT THE WINDOW WALL ARE CENTERED ON EITHER COLUMNS OR WINDOW MULLIONS UNO.
- F. COORDINATE AND PROVIDE BLOCKING FOR MILLWORK AND ITEMS ATTACHED OR MOUNTED TO PARTITIONS OR CEILINGS.
- G. PARTITIONS ARE DIMENSIONED FROM FINISH FACE TO FINISH FACE. UNO MAINTAIN DIMENSIONS MARKED "CLEAR". ALLOW FOR THICKNESSES AND MOUNTING OF FINISHES.

**UNIVERSITY OF ARKANSAS**  
68 S RAZORBACK RD., FAYETTEVILLE, ARKANSAS 72701, UNITED STATES

  
**UNIVERSITY OF ARKANSAS**

**Gensler**

5005 Greenville Avenue  
Dallas, TX 75206  
United States

Tel: 214.273.1500  
Fax: 214.273.1505

△	Date	Description
---	------	-------------

Seal / Signature

**PRELIMINARY**

THESE DOCUMENTS ARE INCOMPLETE AND ARE RELEASED FOR INTERIM REVIEW ONLY AND ARE NOT INTENDED FOR REGULATORY APPROVAL, PERMIT, OR CONSTRUCTION PURPOSES.

ARCHITECT'S NAME  
ARKANSAS REGISTERED ARCHITECT, LICENSE #  
XXXXXXXXXX

01/23/23

Project Name  
**RAZORBACK ROAD  
PARKING GARAGE**

Project Number  
**122.0144.000**

Description  
**CONSTRUCTION PLAN - LEVEL 06 -  
TWO-STEP**

KEY PLAN

Scale  
As indicated

Ref North  




SHEET NOTES

UNIVERSITY OF  
ARKANSAS

68 S RAZORBACK RD, FAYETTEVILLE,  
ARKANSAS 72701, UNITED STATES

  
UNIVERSITY OF  
ARKANSAS

Gensler

5005 Greenville Avenue  
Dallas, TX 75206  
United States

Tel 214.273.1900  
Fax 214.273.1905

GENERAL NOTES

△	Date	Description
---	------	-------------

Seal / Signature

PRELIMINARY

THESE DOCUMENTS ARE INCOMPLETE AND ARE RELEASED FOR  
INTERIM REVIEW ONLY AND ARE NOT INTENDED FOR REGULATORY  
APPROVAL, PERMIT, OR CONSTRUCTION PURPOSES

ARCHITECT'S NAME  
ARKANSAS REGISTERED ARCHITECT, LICENSE #  
XXXXXXXXXX

01/23/23

Project Name  
RAZORBACK ROAD  
PARKING GARAGE

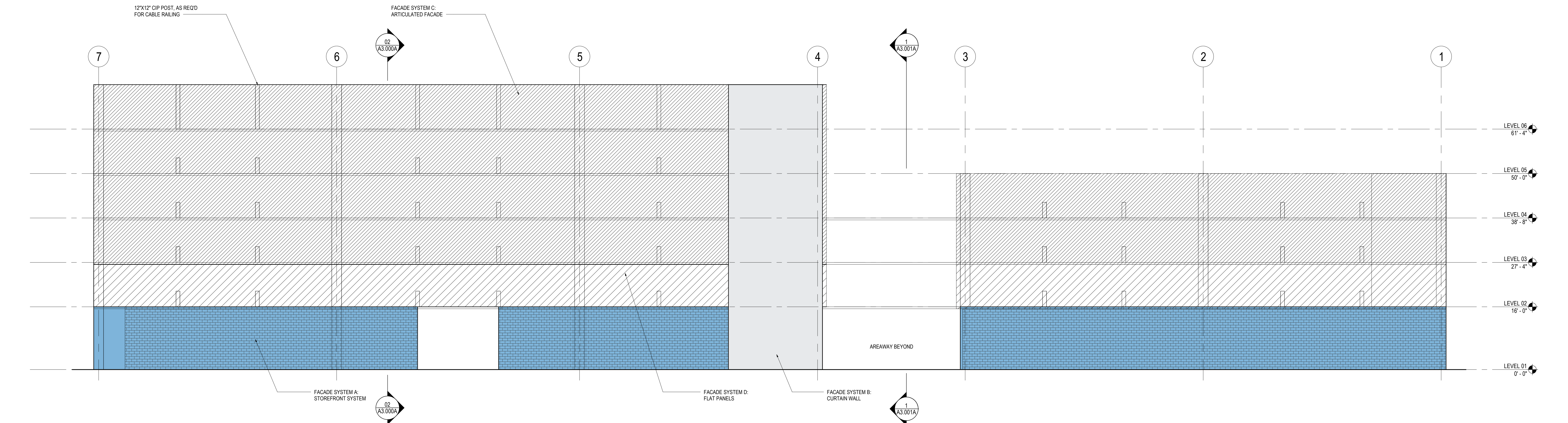
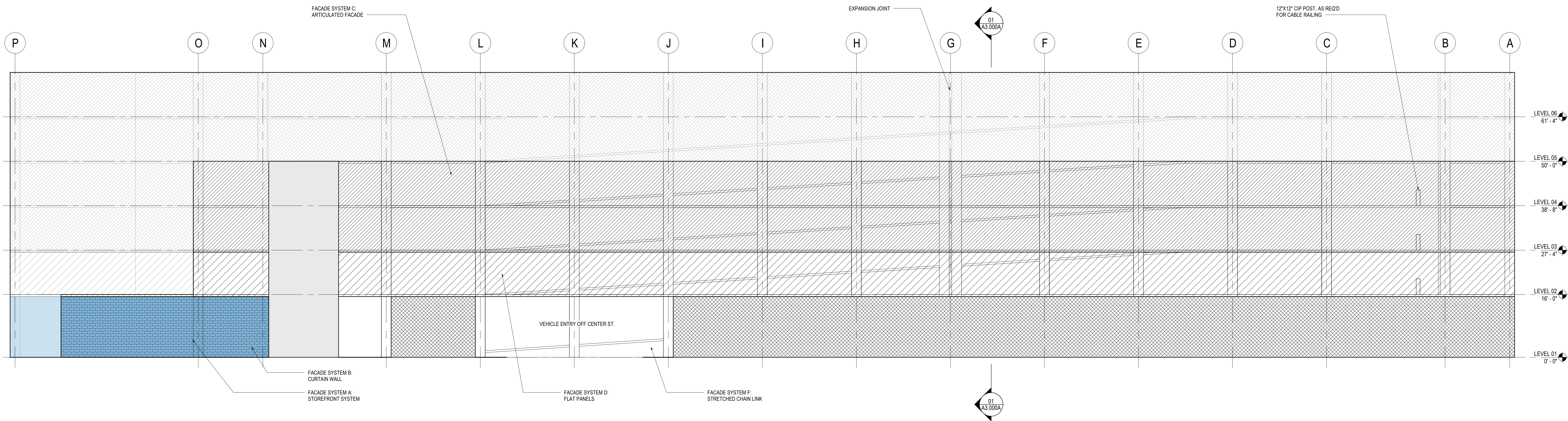
Project Number  
122.0144.000


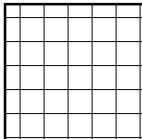

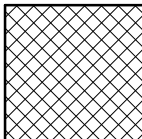
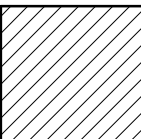
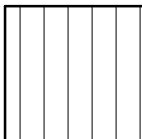
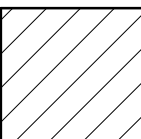
Description  
BUILDING ELEVATIONS - TWO-STEP

Scale  
As indicated

Ref North

A2.000A



FACADE LEGEND			
	FACADE SYSTEM A: STOREFRONT GLASS		FACADE SYSTEM E: PERFORATED PANELS
	FACADE SYSTEM B: CURTAIN WALL		FACADE SYSTEM F: STRETCHED CHAIN LINK
	FACADE SYSTEM C: ARTICULATED FACADE		FACADE SYSTEM G: VERTICAL MITL PANEL
	FACADE SYSTEM D: FLAT PANELS		



SHEET NOTES

UNIVERSITY OF  
ARKANSAS

68 S RAZORBACK RD., FAYETTEVILLE,  
ARKANSAS 72701, UNITED STATES

  
UNIVERSITY OF  
ARKANSAS

Gensler

5005 Greenville Avenue  
Dallas, TX 75206  
United States

Tel 214.273.1900  
Fax 214.273.1905

GENERAL NOTES

△	Date	Description
---	------	-------------

Seal / Signature

PRELIMINARY

THESE DOCUMENTS ARE INCOMPLETE AND ARE RELEASED FOR  
INTERIM REVIEW ONLY AND ARE NOT INTENDED FOR REGULATORY  
APPROVAL, PERMIT, OR CONSTRUCTION PURPOSES

ARCHITECT'S NAME  
ARKANSAS REGISTERED ARCHITECT, LICENSE #  
XXXXXXXXXX

01/23/23

Project Name  
RAZORBACK ROAD  
PARKING GARAGE

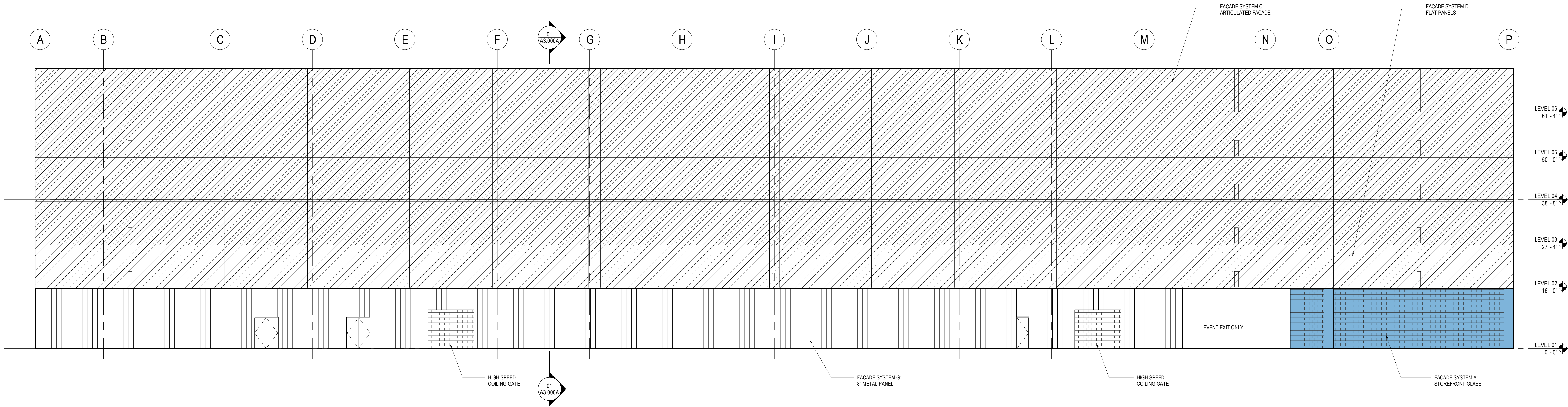
Project Number  
122.0144.000

Description  
BUILDING ELEVATIONS - TWO-STEP

Scale  
As indicated

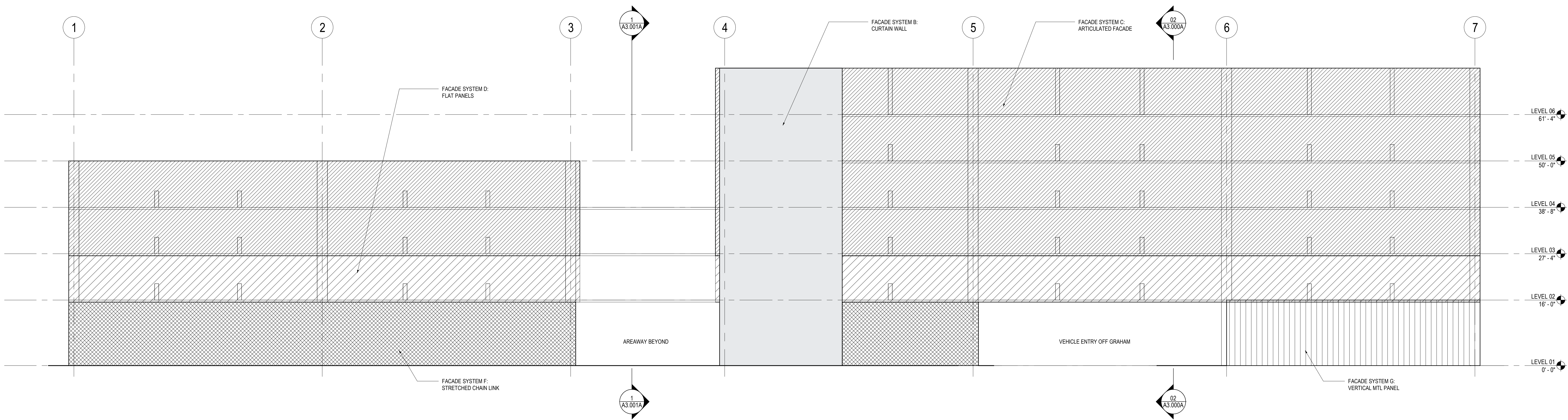
Ref North

A2.001A




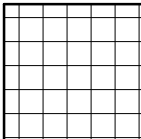

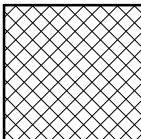
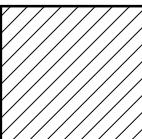
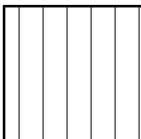
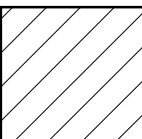
1 SOUTH ELEVATION - TWO-STEP  
SCALE: 3/32" = 1'-0"

REF: 01 / A1.101A

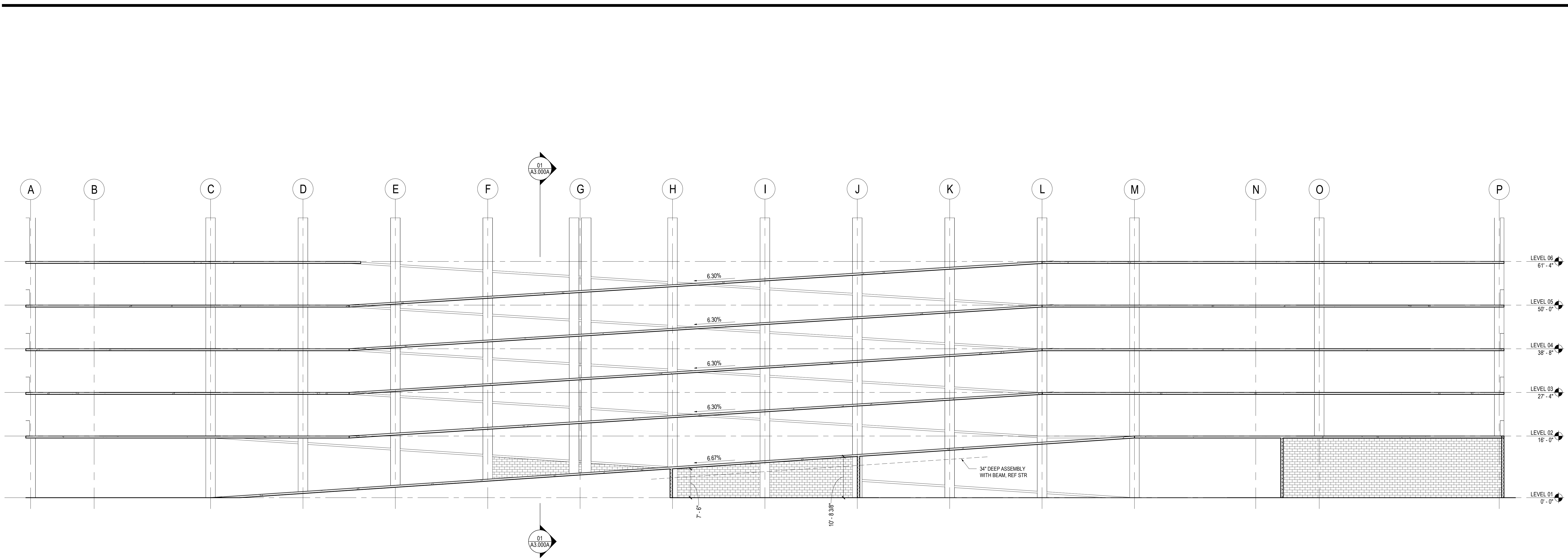


2 WEST ELEVATION - TWO-STEP  
SCALE: 3/32" = 1'-0"

REF: 01 / A1.101A

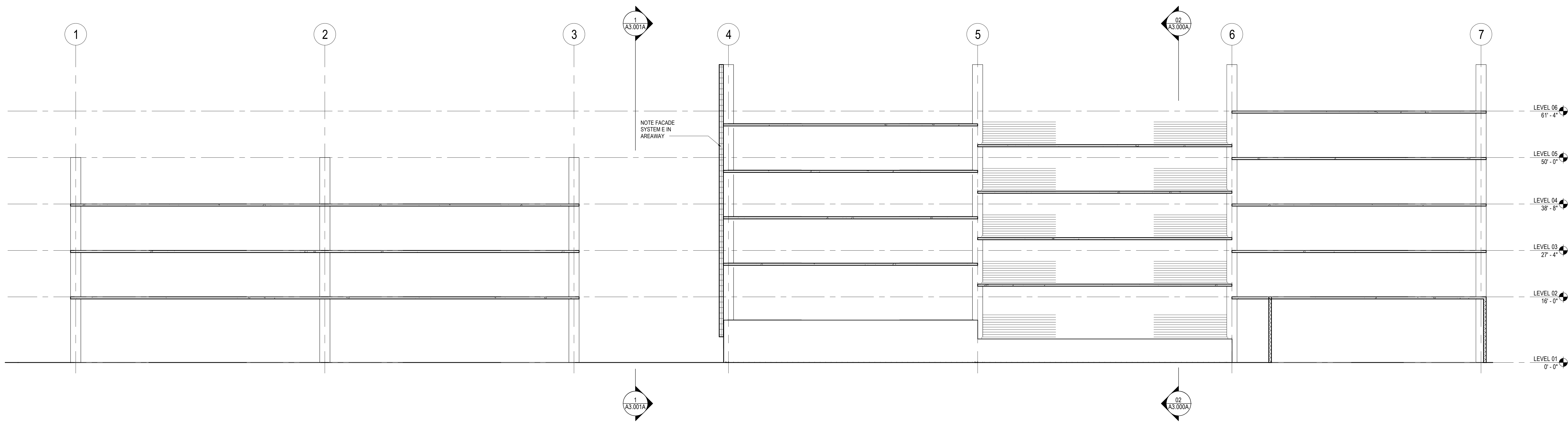
FACADE LEGEND			
	FACADE SYSTEM A: STOREFRONT GLASS		FACADE SYSTEM E: PERFORATED PANELS
	FACADE SYSTEM B: CURTAIN WALL		FACADE SYSTEM F: STRETCHED CHAIN LINK
	FACADE SYSTEM C: ARTICULATED FACADE		FACADE SYSTEM G: VERTICAL MTL PANEL
	FACADE SYSTEM D: FLAT PANELS		






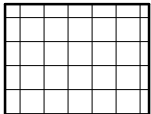

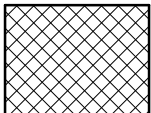
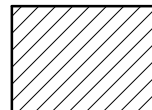
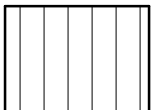
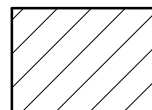
02 EAST/WEST SECTION - TWO-STEP  
SCALE: 3/32" = 1'-0"

REF: 01 / A1.101A



01 NORTH/SOUTH SECTION - TWO-STEP  
SCALE: 3/32" = 1'-0"

REF: 01 / A1.101A

FACADE LEGEND	
 FACADE SYSTEM A: STOREFRONT GLASS	 FACADE SYSTEM E: PERFORATED PANELS
 FACADE SYSTEM B: CURTAIN WALL	 FACADE SYSTEM F: STRETCHED CHAIN LINK
 FACADE SYSTEM C: ARTICULATED FACADE	 FACADE SYSTEM G: VERTICAL MITL PANEL
 FACADE SYSTEM D: FLAT PANELS	

SHEET NOTES

GENERAL NOTES

KEY PLAN

UNIVERSITY OF  
ARKANSAS

68 S RAZORBACK RD, FAYETTEVILLE,  
ARKANSAS 72701, UNITED STATES



UNIVERSITY OF  
ARKANSAS

Gensler

5005 Greenville Avenue  
Dallas, TX 75206  
United States

Tel 214.273.1500  
Fax 214.273.1505

△	Date	Description
---	------	-------------

Seal / Signature

PRELIMINARY

THESE DOCUMENTS ARE INCOMPLETE AND ARE RELEASED FOR  
INTERIM REVIEW ONLY AND ARE NOT INTENDED FOR REGULATORY  
APPROVAL, PERMIT, OR CONSTRUCTION PURPOSES

ARCHITECT'S NAME  
ARKANSAS REGISTERED ARCHITECT, LICENSE #  
XXXXXXXXXX

01/23/23

Project Name

RAZORBACK ROAD  
PARKING GARAGE

Project Number

122.0144.000

Description

OVERALL BUILDING SECTIONS -  
TWO-STEP

Scale

As indicated

Ref North



A3.000A



## KEY PLAN



Date	Description
--------------------------------------------------------------------------------------------	-------------

Seal / Signature

**PRELIMINARY**  
THESE DOCUMENTS ARE INCOMPLETE, AND ARE RELEASED FOR  
INTERIM REVIEW ONLY ARE NOT INTENDED FOR REGULATORY  
APPROVAL, PERMIT, OR CONSTRUCTION PURPOSES  
**ARCHITECT'S NAME**  
**ARKANSAS REGISTERED ARCHITECT: LICENSE #**  
**XX/XX/XXXX**

Project Name

RAZORBACK ROAD  
PARKING GARAGE

Project Number

122.0144.000

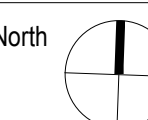
Description
OVERALL BUILDING SECTIONS - TWO-STEP

Scale


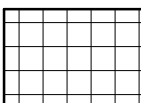

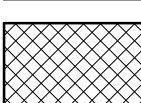


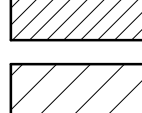
As indicated

Ref North

**A3.001A**



## FACADE LEGEND

	FACADE SYSTEM A: STOREFRONT GLASS		FACADE SYSTEM E: PERFORATED PANELS
	FACADE SYSTEM B: CURTAIN WALL		FACADE SYSTEM F: STRETCHED CHAIN LINK
	FACADE SYSTEM C: ARTICULATED FACADE		FACADE SYSTEM G: VERTICAL MTL. PANEL
	FACADE SYSTEM D: FLAT PANELS		